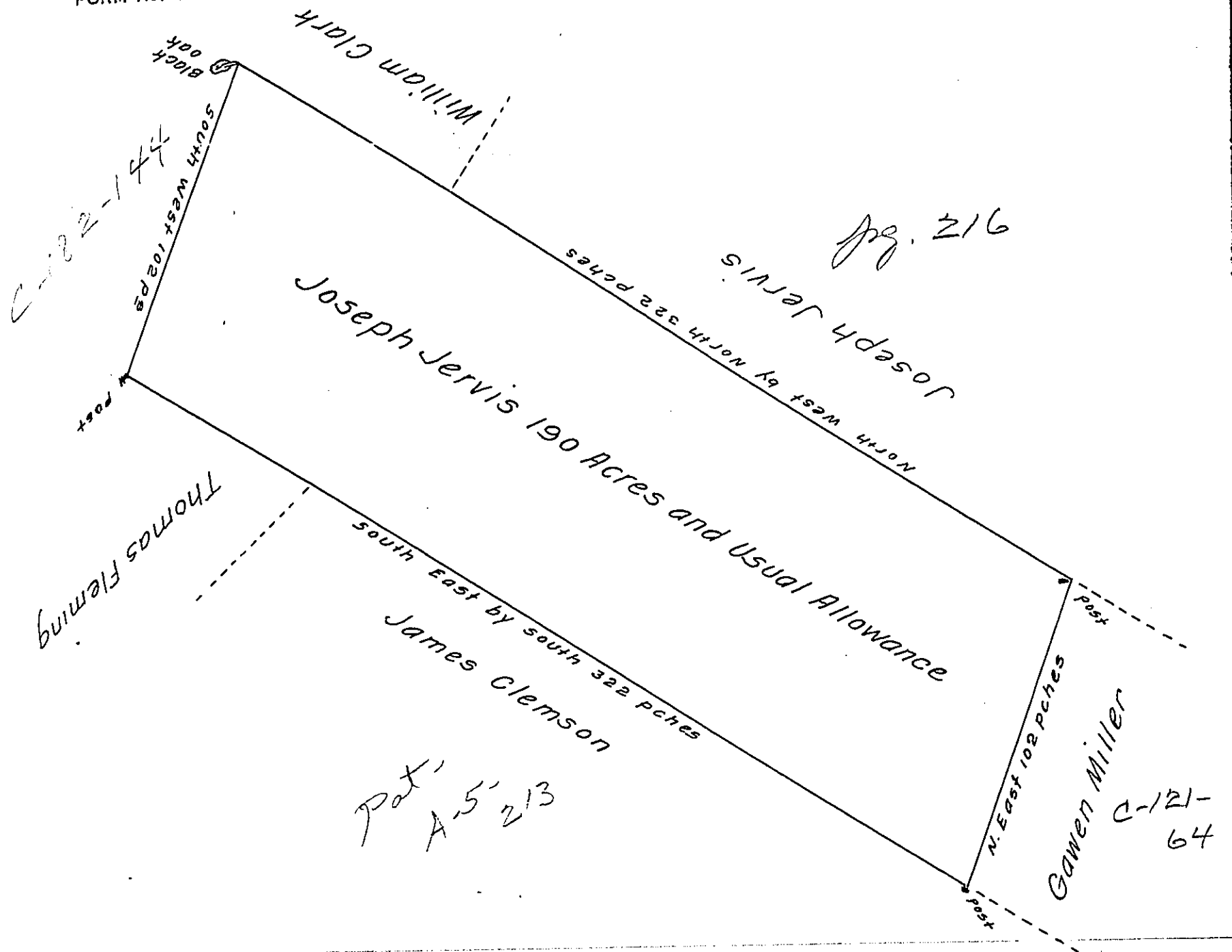


FORM No. 1.



In Pursuance of a warrant from the Commissioners of Property dated the 30th day of June 1714. Surveyed to Joseph Jervis on the 19th day of April 173 (obl.) The above described Tract of Land situate in Salisbury Township in Lancaster County. Containing one hundred and Ninety Acres and the Usual Allowance for Roads.

Jn^o Taylor. —

IN TESTIMONY that the above is a copy of the original remaining on file in the Department of Internal Affairs of Pennsylvania, made conformably to an Act of Assembly approved the 16th day of February, 1833, I have hereunto set my Hand and caused the Seal of said Department to be affixed at Harrisburg, this thirtieth day of March 1910.

Henry Howell

Secretary of Internal Affairs.